

DV-CU-V

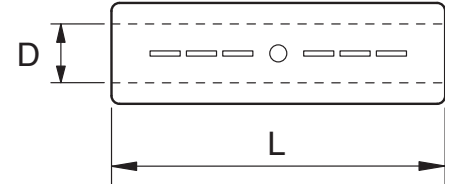
Cu compression connector

complies with DIN 46267, without separator

Strain relief connector (hexagonally compressed) for copper conductor, suitable for joints.



Dimensions



L = Length

D = Centric bore hole

Q = Cross section

K = Die code no. ~outer diameter

Application

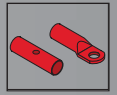
- For RM/SM copper conductors complying with DIN VDE 0295

Material

- Copper tin-plated

Type		L mm	D mm	Q mm ²	K	Art.-No.
DV-CU-V	6	30	3.8	6	5	125895
	10	30	4.5	10	6	125950
	16	50	5.5	16	8	125951
	25	50	7.0	25	10	125952
	35	50	8.2	35	12	125953
	50	56	10.0	50	14	125954
	70	56	11.5	70	16	125955
	95	70	13.5	95	18	125956
	120	70	15.5	120	20	125957
	150	80	17.0	150	22	125958
	185	85	19.0	185	25	125959
	240	90	21.5	240	28	125960
	300	100	24.5	300	32	125961
	400	150	27.5	400	38	125962
	500	160	31.0	500	42	125967
	625	160	34.5	625	44	125963
800	200	40.0	800	52	125964	
1000	200	44.0	1000	58	125965	

To be used with suitable compression tool with DIN dies.
Fixed price – no metal surcharge



DVZ-CU-V-LD

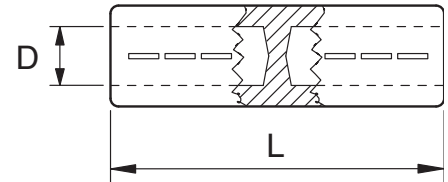
Cu compression connector

complies with DIN 46267, with separator

Strain relief connector (hexagonally compressed) with separator for copper conductor, suitable for joints.



Dimensions



L = Length

D = Centric bore hole

Q = Cross section

K = Die code no.-outer diameter

Application

- Especially for transition sleeves and pot end joints
- For RM/SM copper conductors complying with DIN VDE 0295

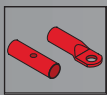
Material

- Copper tin-plated

Type		L m	D mm	Q mm ²	K	Art.-No.
DVZ-CU-V-LD	6	30	3.8	6	6	166374
	10	30	4.5	10	6	125966
	16	50	5.5	16	8	125897
	25	50	7.0	25	10	125898
	35	50	8.2	35	12	125899
	50	56	10.0	50	14	125900
	70	56	11.5	70	16	125901
	95	70	13.5	95	18	125902
	120	70	15.5	120	20	125903
	150	80	17.0	150	22	125904
	185	85	19.0	185	25	125905
	240	90	21.5	240	28	125906
	300	100	24.5	300	32	125907

To be used with suitable compression tool with DIN dies.

Fixed price – no metal surcharge



DV-AL

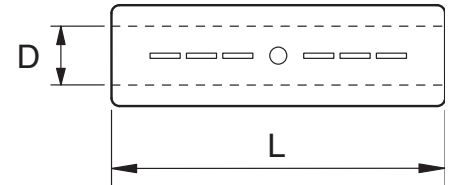
Al Compression connector

complies with DIN 46267, without separator

Strain relief connector (hexagonally compressed) without separator for aluminium conductor, suitable for joints.



Dimensions



L = Length

D = Centric bore hole

Q = Cross section

RM = Multi-core stranded round

SM = Multi-core stranded sector shaped

SE = Sector shaped solid

RE = Round solid

K = Die code no.~outer diameter

Application

- RM/SM, SE and RE aluminium conductors complying with DIN VDE 0295

Note

- *does not comply with DIN Standards

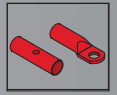
Material

- Blank aluminium

Type	L mm	D mm	Q mm ²			K	Art.-No.	
			RM/SM	SE	RE			
DV-AL	16*	55	5.8	16	25	16	12	195344
	25	70	6.8	25	35	25	12	195345
	35	85	8.0	35	50	35	14	195346
	50	85	9.8	50	70	50	16	195347
	70	105	11.2	70	95		18	125947
	95	105	12.6	95	120		22	125948
	120	105	14.7	120	150		22	125888
	150	125	16.3	150	185		25	125889
	185	125	18.3	185	240		28	125890
	240	145	21.0	240	300		32	125891
	300	145	23.3	300			34	125892
	400	210	26.0	400			38	195348
500	210	29.0	500			44	195349	

To be used with suitable compression tool with DIN dies.

Fixed price – no metal surcharge



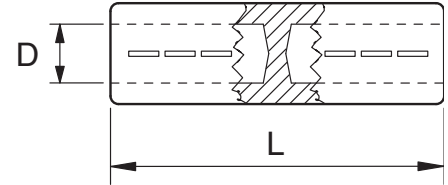
DVZ-AL-LD Al Compression connector

complies with DIN 46267, with separator

Strain relief connector (hexagonally compressed) with separator for aluminium conductor.



Dimensions



L = Length
D = Centric bore hole
Q = Cross section
RM = Multi-core stranded round
SM = Multi-core stranded sector shaped
SE = Sector shaped solid
K = Die code no.~outer diameter

Application

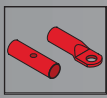
- RM/SM, SE and RE aluminium conductors complying with DIN VDE 0295
- Especially for transition sleeves and pot end joints

Material

- Blank aluminium

Type		L mm	D mm	Q mm ²		K	Art.-No.
				RM/SM	SE		
DVZ-AL-LD	16	75	5.4	16	25	12	198217
	25	75	6.8	25	35	12	198219
	35	90	8.0	35	50	14	198220
	50	90	9.8	50	70	16	198221
	70	110	11.2	70	95	18	198222
	95	110	13.2	95	120	22	198223
	120	110	14.7	120	150	22	198225
	150	130	16.3	150	185	25	198226
	185	130	18.3	185	240	28	198228
	240	150	21.0	240	300	32	198230
	300	155	23.3	300		34	198232

To be used with suitable compression tool with DIN dies.
Fixed price – no metal surcharge



DK-CU-V

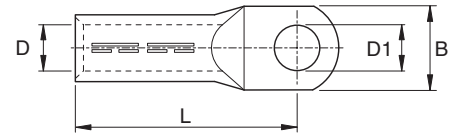
Cu compression cable lug

complies with DIN 46235

Cable lugs (hexagonally compressed) for copper conductors, suitable for indoor terminations.



Dimensions



L = Length
B = Width
D = Centric bore hole
D1 = Flat hole diameter
Q = Cross section
K = Die code no.~outer diameter

Application

- Cable lugs for RM/SM copper conductors complying with DIN VDE 0295

Note

- *does not comply with DIN Standards

Material

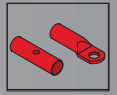
- Copper tin-plated

Test standard

- DIN 46235, Cable lugs for compression connections (lug mould for copper conductor)

Type	L mm	B mm	D mm	D1 mm	Q mm ²	K mm	Art.-No.
6/6	24	8.5	3.8	6.4	6	5	126040
10/8*	27	13.0	4.5	8.4	10	6	126044
16/8	36	13.0	5.5	8.4	16	8	126046
16/12*	36	18.0	5.5	13.0	16	8	126048
25/10	38	17.0	7.0	10.5	25	10	126051
25/12	38	19.0	7.0	13.0	25	10	126052
35/10	42	19.0	8.2	10.5	35	12	126054
35/12	42	21.0	8.2	13.0	35	12	126055
50/10	52	22.0	10.0	10.5	50	14	126059
50/12	52	24.0	10.0	13.0	50	14	126060
70/10	55	24.0	11.5	10.5	70	16	126064
70/12	55	24.0	11.5	13.0	70	16	126065
95/12	65	28.0	13.5	13.0	95	18	126070
95/16	65	32.0	13.5	17.0	95	18	126072
120/12	70	32.0	15.5	13.0	120	20	126074
120/16	70	32.0	15.5	17.0	120	20	126077
150/12	78	34.0	17.0	13.0	150	22	126080
150/16	78	34.0	17.0	17.0	150	22	126082
185/12	82	37.0	19.0	13.0	185	25	126085
185/16	82	37.0	19.0	17.0	185	25	126087
240/12	92	42.0	21.5	13.0	240	28	126089
240/16	92	42.0	21.5	17.0	240	28	126091
300/14*	100	48.0	24.5	15.0	300	32	126093
300/16	100	48.0	24.5	17.0	300	32	126094
400/16	115	55.0	27.5	17.0	400	38	126096
500/16*	125	60.0	31.0	17.0	500	42	126098
625/16*	135	60.0	34.5	17.0	625	44	126099
800/20	165	75.0	40.0	21.0	800	52	126102

To be used with suitable compression tool with DIN dies.
Fixed price – no metal surcharge



DK-CU-V-LD

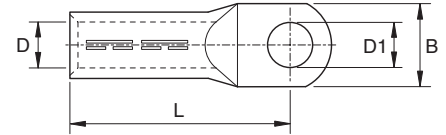
Cu compression cable lug

complies with DIN 46235, blocked

Cable lugs Cu (hexagonal compression type) for copper conductors, designed for outdoor terminations.



Dimensions



- L = Length
- B = Width
- D = Centric bore hole
- D1 = Flat hole diameter
- Q = Cross section
- K = Die code no.~outer diameter

Application

- Cable lugs for RM/SM copper conductors complying with DIN VDE 0295

Note

- *does not comply with DIN Standards

Material

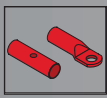
- Copper tin-plated

Test standard

- DIN 46235, Cable lugs for compression connections (lug mould for copper conductor)

Type		L mm	B mm	D mm	D1 mm	Q mm ²	K mm	Art.-No.
DK-CU-V-LD	16/12*	36	18	5.5	13.0	16	8	159667
	25/10	38	17	7.0	10.5	25	10	126134
	35/12	42	21	8.2	13.0	35	12	159670
	50/12	52	24	10.0	13.0	50	14	126135
	70/12	55	24	11.5	13.0	70	16	148432
	95/12	65	28	13.5	13.0	95	18	126136
	120/12	70	32	15.5	13.0	120	20	195350
	150/16	78	34	17.0	17.0	150	22	126137
	185/16	82	37	19.0	17.0	185	25	195351
	240/16	92	42	21.5	17.0	240	28	126138
	300/16	100	46	24.5	17.0	300	32	176369
	400/16	115	54	27.5	17.0	400	38	126105
500/16*	125	60	31.0	17.0	500	42	126106	

To be used with suitable compression tool with DIN dies.
Fixed price – no metal surcharge



DK-AL-LD

Al compression cable lug

complies with DIN 46329, blocked

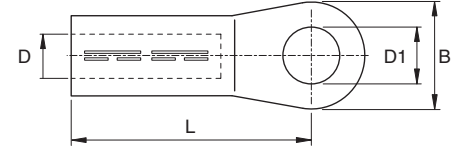
Cable lugs (hexagonally compressed) for aluminium conductors, suitable for indoor and outdoor terminations.



Note

- *does not comply with DIN Standards

Dimensions



L = Length

B = Width

D = Centric bore hole

D1 = Flat hole diameter

Q = Cross section

RM = Multi-core stranded round

SM = Multi-core stranded sector shaped

SE = Sector shaped solid

RE = Round solid

K = Die code no.~outer diameter

Material

- Blank aluminium

Test standard

- DIN 46329, Cable lugs for compression connections (circular mould for aluminium conductor)

Type		L mm	B mm	D mm	D1 mm	Q mm ²			K mm	Art.-No.
						RM/SM	RE	SE		
DK-AL-LD	16/10*	50	20	5.4	10.5	16	16	25	12	194950
	25/10	50	25	6.8	10.5	25	25	35	12	194949
	25/12	50	25	6.8	13.0	25	25	35	12	194947
	35/10	62	25	8.0	10.5	35	35	50	14	194945
	35/12	62	25	8.0	13.0	35	35	50	14	194944
	50/12	62	25	9.8	13.0	50	50	70	16	194943
	70/12	72	25	11.2	13.0	70		95	18	194942
	95/12	75	25	12.6	13.0	95		120	22	194941
	95/16*	80	30	12.6	17.0	95		120	22	194940
	120/12	80	30	14.7	13.0	120		150	22	194939
	120/16	80	30	14.7	17.0	120		150	22	194938
	150/12	90	30	16.3	13.0	150		185	25	194937
	150/16	90	30	16.3	17.0	150		185	25	194936
	185/12	91	30	18.3	13.0	185		240	28	194935
	185/16	91	30	18.3	17.0	185		240	28	194934
	240/16	103	38	21.0	17.0	240		300	32	194933
	300/16	103	38	23.3	17.0	300			34	194932
400/20	116	38	26.0	21.0	400			38	194930	
500/20	122	44	29.0	21.0	500			44	194908	

To be used with suitable compression tool with DIN dies.
Fixed price – no metal surcharge

EGA**Earthing accessories**

for cables with tape screen and/or armouring for terminations

Type EGA earthing kits for terminations for single-core cables with copper braid or aluminium screen (Fig. 1), and for unarmoured three-core cables (Fig. 3). Kit components: 3 flat-rolled copper wires and 3 pressure springs

**Characteristics**

- Quick, safe and easy assembly
- Superior electrical properties
- High mechanical strength
- Suitable for indoor and outdoor use

Application

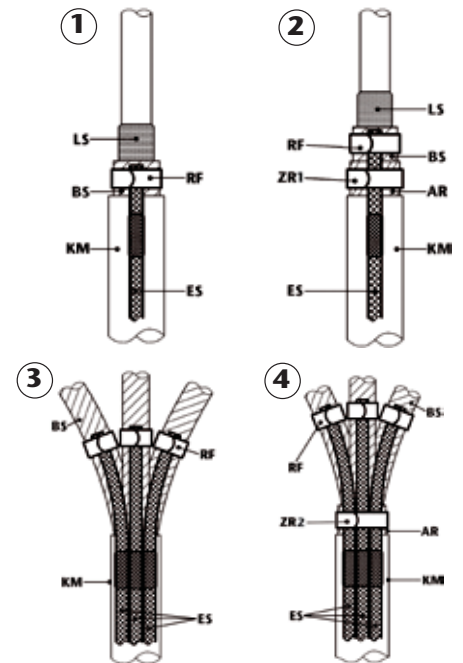
- Earthing continuity and earth contactor
- For cast resin, heat-shrink and slip-on cable accessories
- Enables solder-free electrical connection of metal cable components (screen, armouring, metal sheath).

Note

- 1) Single core cables with copper tape or aluminium screens, non armoured.
- 2) Single core cables with copper tape or aluminium screens, armoured: Please order extra pressure spring ZR1.
- 3) Three core cables with copper tape or aluminium screens, non armoured.
- 4) Three core cables with copper tape or aluminium screens, armoured: Please order extra pressure spring ZR2.

Scope of delivery

- Copper wire
- Pressure spring

Dimensions

LS = external semi-conducting layer
 BS = Cu-Tape screen
 KM = Cable sheath
 RF = Type RF pressure spring
 ES = Cu-Earthing wire, flat tin-plated
 AR = Armouring
 ZR = Additional type RF pressure spring

Type	L mm	Pressure spring	Copper braid		Nominal cross section mm ²					ZR1	ZR2	Art.-No.	
			Ø of hole mm	Nominal cross section mm ²	7.2 kV	12 kV	17.5 kV	24 kV	36 kV				
EGA	16-2	500	RF 2	8.5	16	150	120	70	50		RF 3	RF 5	143502
	16-3	500	RF 3	8.5	16	150 - 240	120 - 240	95 - 185	70 - 150	120	RF 4	RF 5	143503
	25-3	500	RF 3	10.5	25	150 - 500	120 - 500	95 - 300	70 - 300	70 - 240	RF 4	RF 6	143505
	25-4	500	RF 4	10.5	25					150 - 300	RF 5	RF 6	143506
	35-4	500	RF 4	10.5	35	500 - 1000	500 - 1000	400 - 800	300 - 800	185 - 500	RF 5	RF 6	143508
	35-5	500	RF 5	10.5	35			800 - 1000	800 - 1000	500 - 1000	RF 6		143509

For armoured cables, please order the pressure springs separately.

RF Pressure spring



Characteristics

- Corrosion-resistant
- Fatigue-proof
- Guarantees consistent radial contact stress

Application

- For cast resin, heat-shrink and slip-on cable accessories
- Enables solder-free electrical connection of metal cable components (screen, armouring, metal sheath) and earthing materials (copper grounding wire, copper mesh sleeve)

Colour(s)

- brass

Material

- Special stainless steel

Type	Width mm	External-Ø mm	Cable-Ø mm	Art.-No.
RF 2	16	17.5	17 - 28	126296
RF 3	16	21.5	24 - 37	126297
RF 4	16	29.0	33 - 49	126298
RF 5	20	37.8	44 - 70	126299
RF 6	20	51.3	55 - 92	126300

Pressure springs are no current-carrying parts.